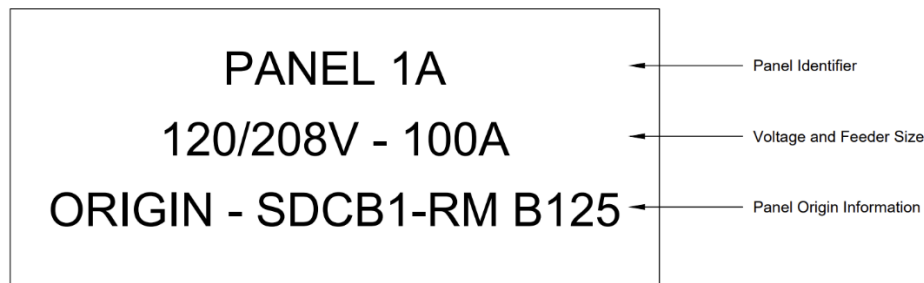


1.0 LABELS

.1 Lamacoid Type

- .1 Panel boards to be labelled using Lamacoid Style of label, provide the following information:
 - .1 120-240V utilize Black Background with White letters.
 - .2 277-600V utilize White Background with Black letters.
 - .3 Emergency Power shall be Red Background with White letters.
- .2 Lamacoid to include the following information:
 - .1 Line 1 - Panel Identifier.
 - .2 Line 2 - Voltage, Feeder Breaker Size (Not panel max ampacity).
 - .3 Line 3 - Origin Location.
- .3 Example below:



.2 Format

- .1 The preferred format is as follows:

[Floor] [Identifier] [Label]-[Type]

Floor:

Numeric 1-99

Basement levels identify with sub heading "B"

Identifier:

SDC – 120/208V, 230, 240V (Used for Distribution panels only)

PDC – 277/480V, 377/600V (Used for Distribution panels only)

Blank – 120/208V, 230V, or 240V

X – 277/480V, 377/600V

EM – Emergency Power

Label:

Alpha Numeric A-Z

Type:

L – Lighting

M – Mechanical

There is no need to label plugloads

.2 Examples:

- .1 1A – Panel 1A, located on first floor, and is for plugloads (120/208V).
- .2 4XC-L – Panel 4XC, located on fourth floor, and is for lighting (277/480V).
- .3 8EMA – Panel 8EMA, located on 8th floor, and is for Emergency power use only (120/208V).
- .4 11XB-M – Panel 11XB, located on 11th floor, and is mechanical loads (277/480V, or 377/600V).
- .5 If all 26 alphanumeric letters are used on a floor, the subsequent panels will be labels as such:

AA, BB, CC, etc...
- .6 If a panel needs to be subfed from a panel, a numeric identifier will be added as such:

Example 1:

Panel 1A is used to subfeed 2 panels, the 2 panels will be labelled:
1A1, 1A2.

Example 2:

Panel 4XB-M is used to subfeed 2 panels, the 2 panels will be labelled:
4XB1-M, 4XB2-M.

*** END OF ELECTRICAL SYSTEMS LABELING SECTION ***